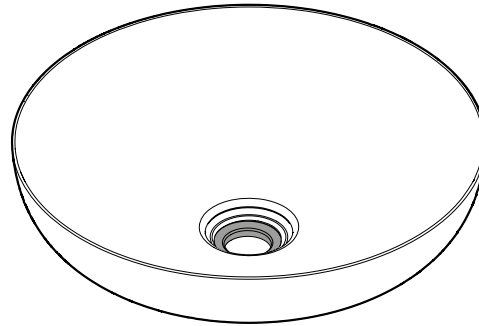
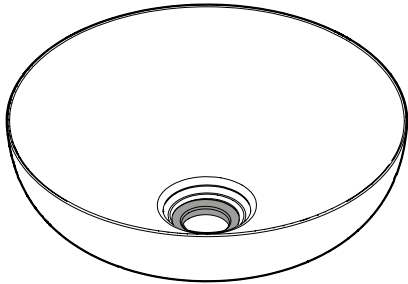


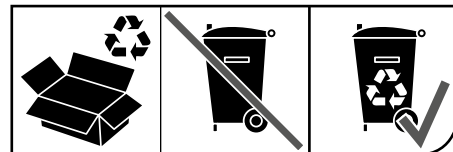
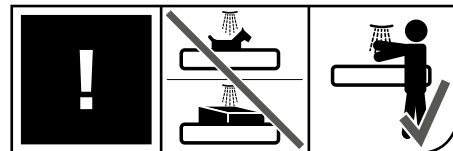
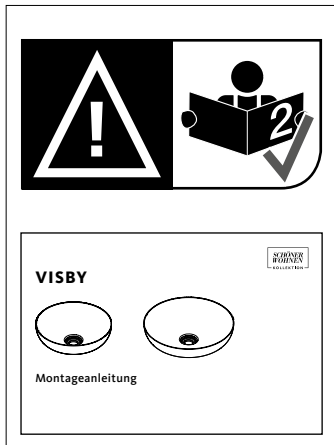
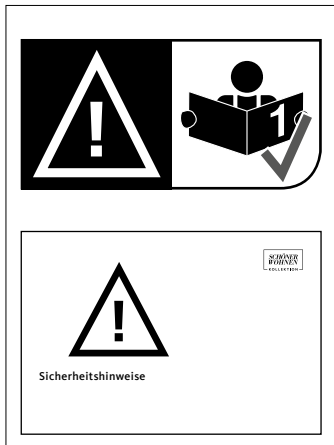
# VISBY



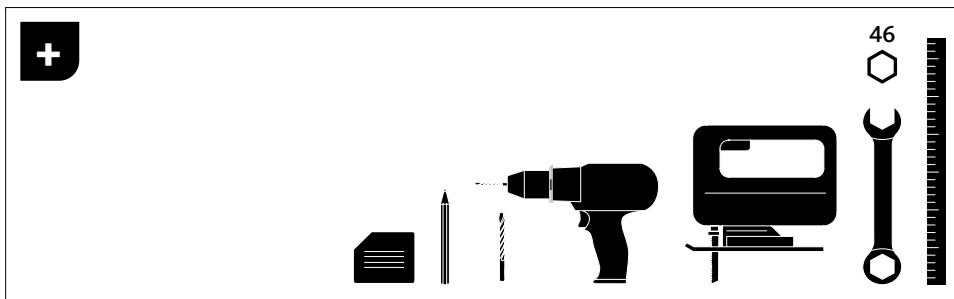
Montageanleitung

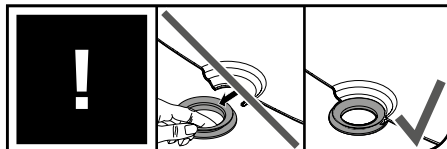
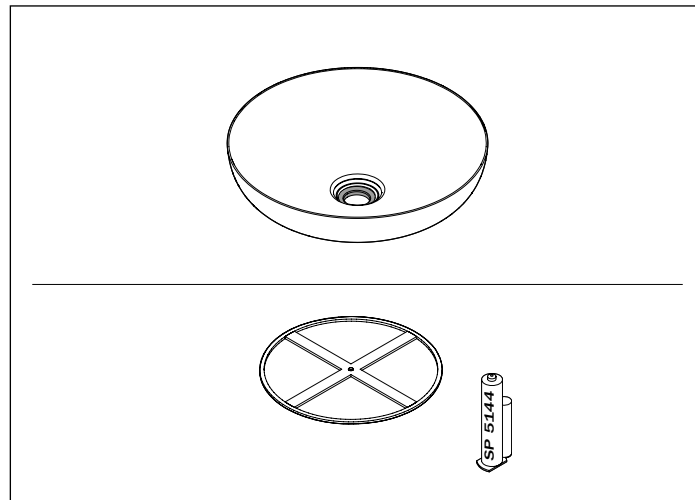
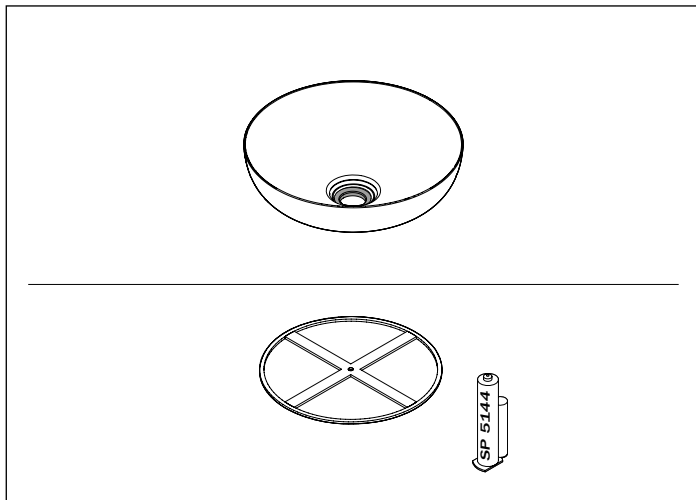
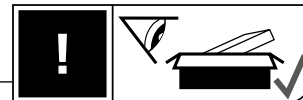
1.

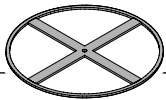
2.



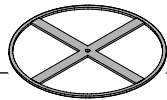
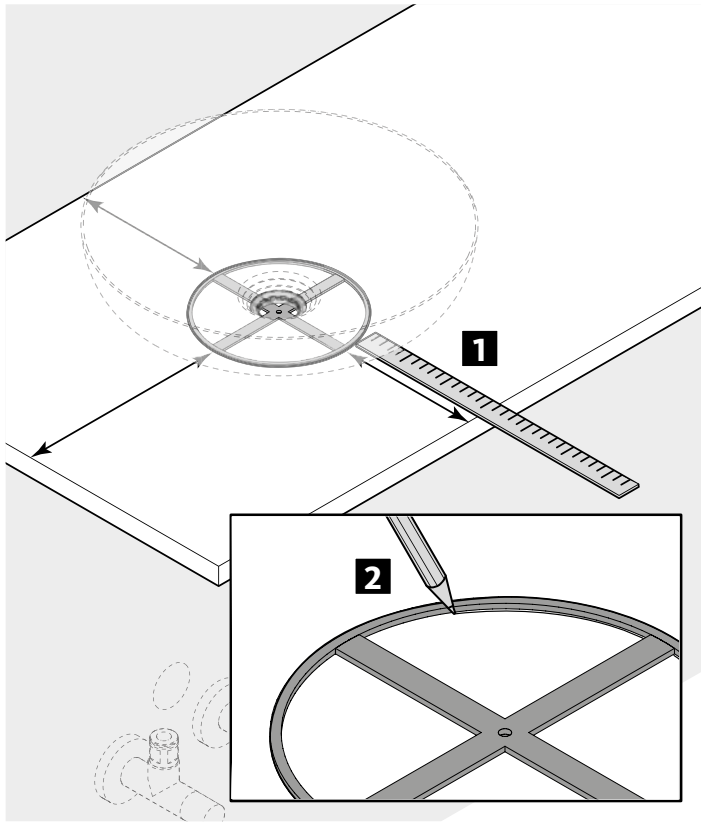
CE 15 KWT 001



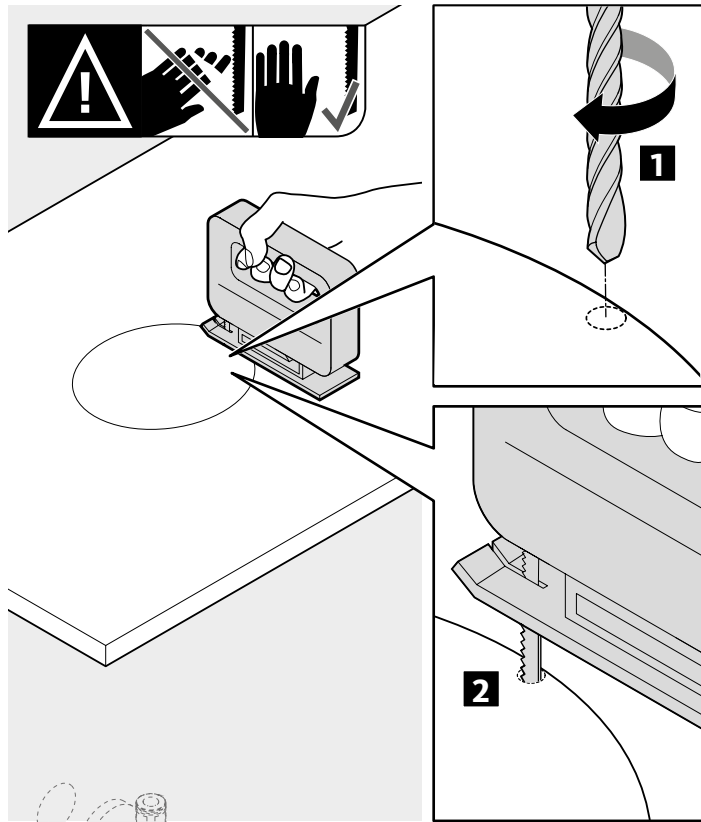


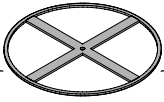


**3.**

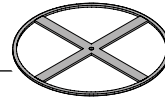


**4.**

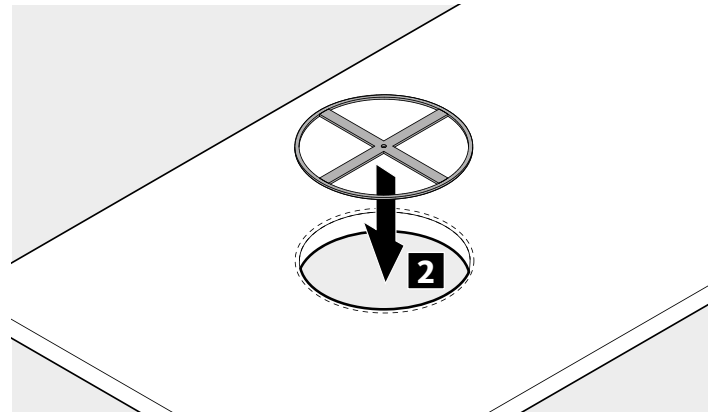
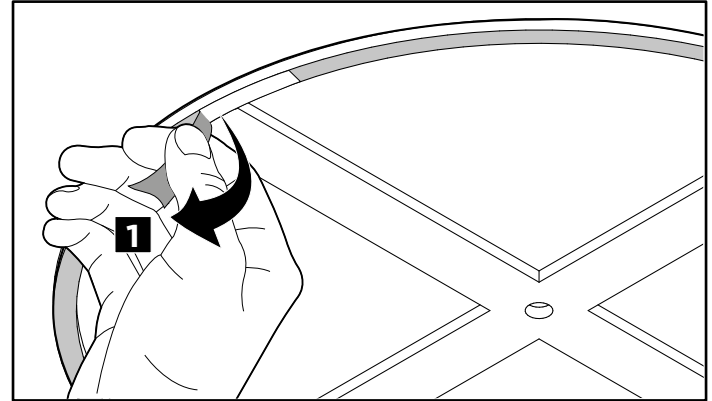
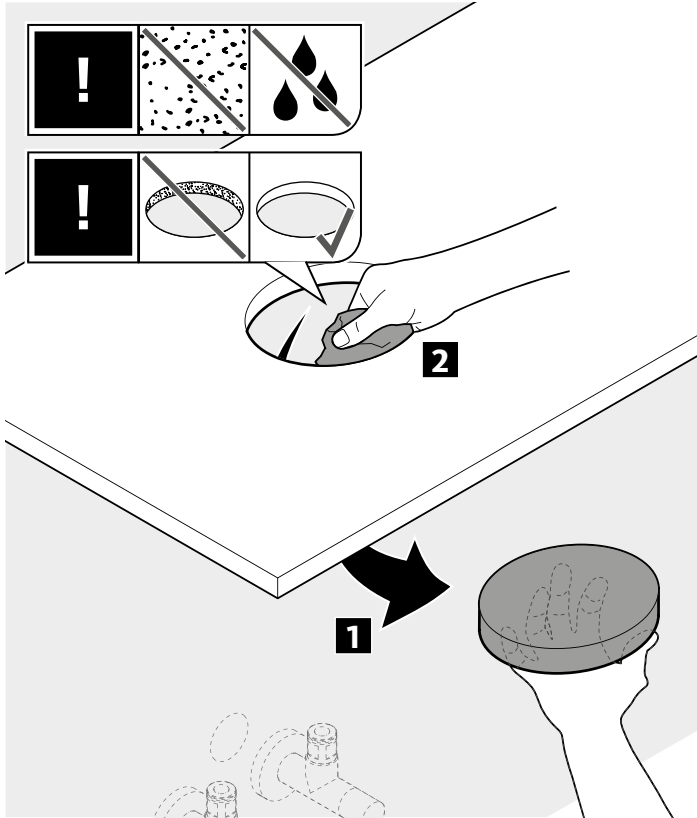


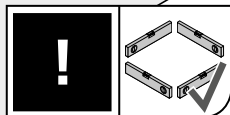
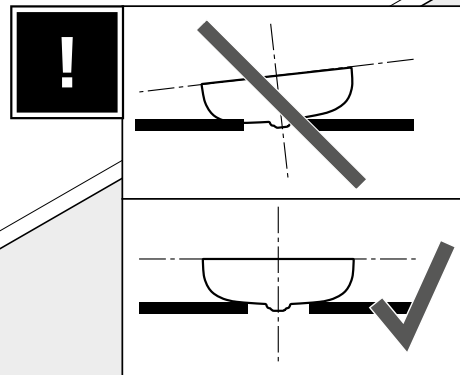
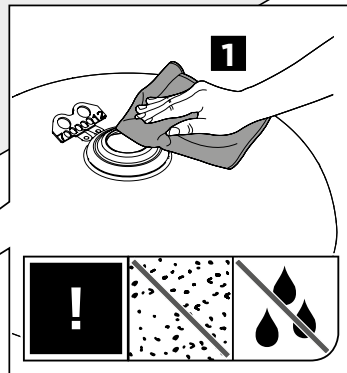
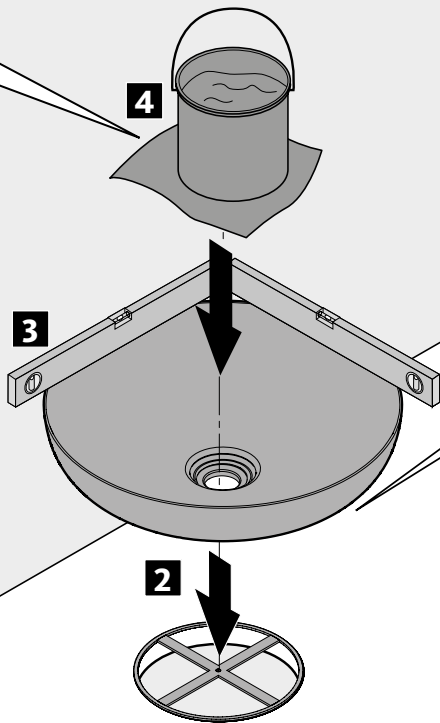
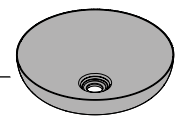


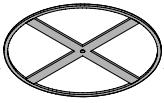
5.



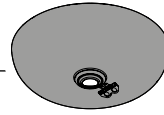
6.



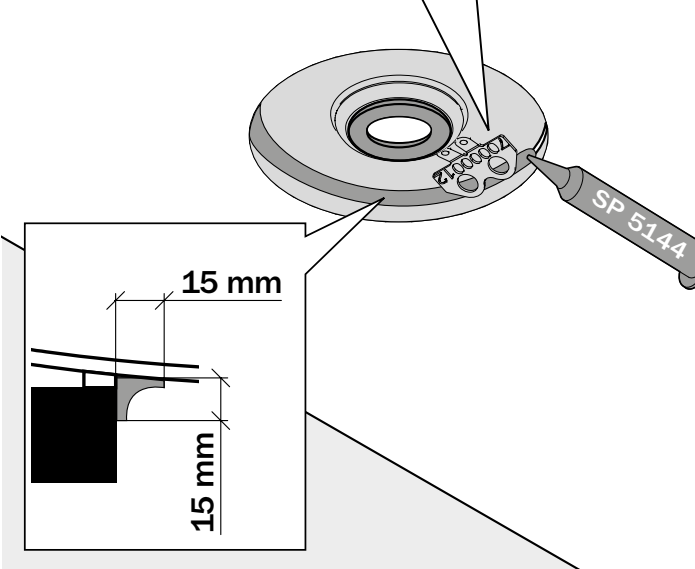
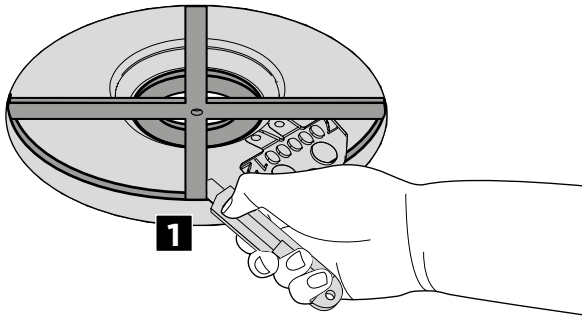
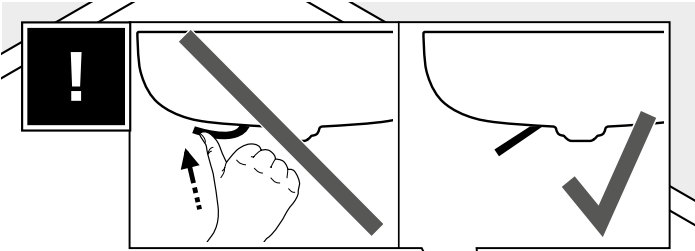
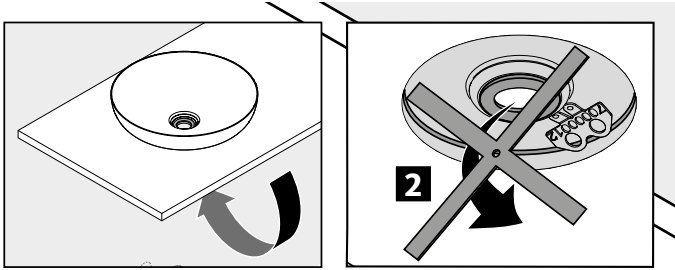


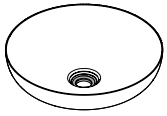


**8.**

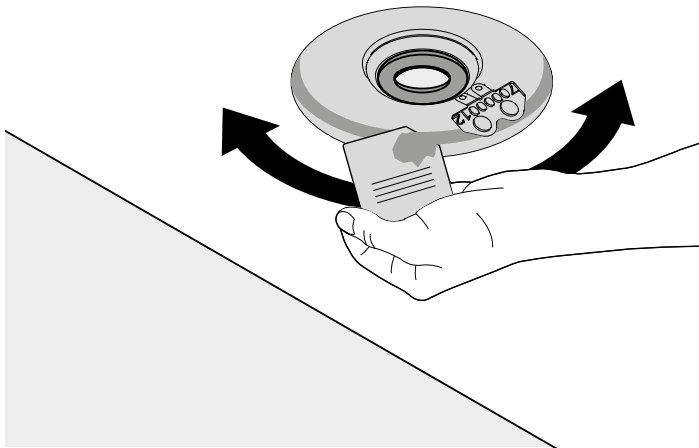
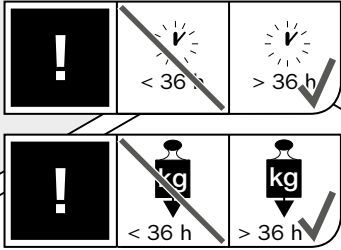


**9.**

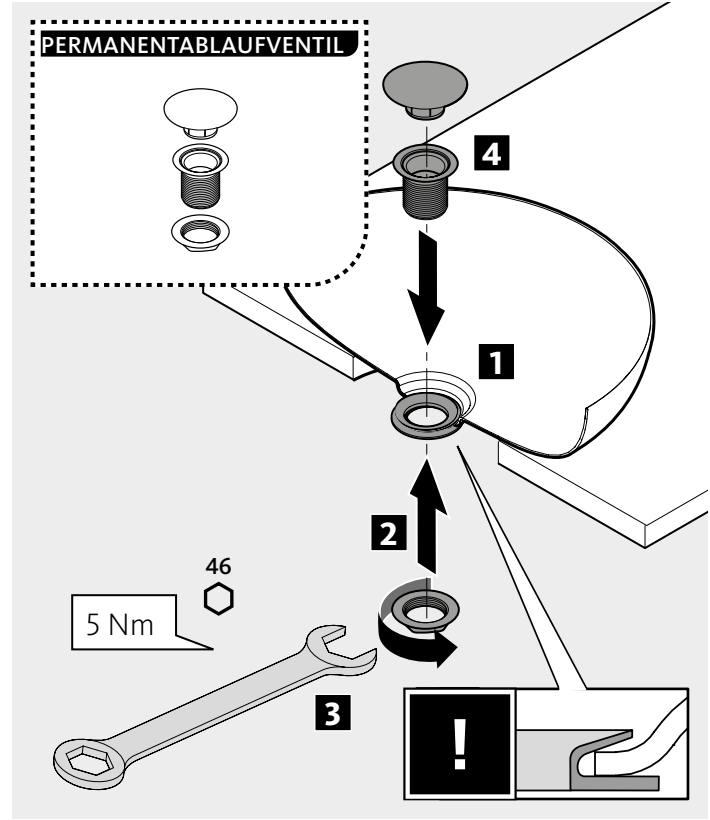




10.



11.







# NOTIZEN

---

---

---

---

---

---

---

---

---

---

---

---

---

---

---

---

---

---

---

---

---

---

---

---

# NOTIZEN

---

---

---

---

---

---

---

---

---

---

---

---

---

---

---

---

---

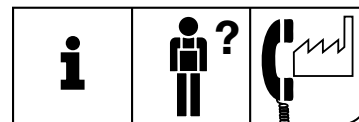
---

---

---

---

---



**Anschrift der Verwaltung:**

Franz Kaldewei GmbH & Co. KG  
Beckumer Straße 33-35  
59229 Ahlen  
Deutschland  
Telefon +49 2382 785 0  
Fax +49 2382 785 200  
[www.kaldewei.com](http://www.kaldewei.com)

® Lizenz der Marke SCHÖNER WOHNEN  
durch Gruner + Jahr Deutschland GmbH  
– Alle Rechte vorbehalten –